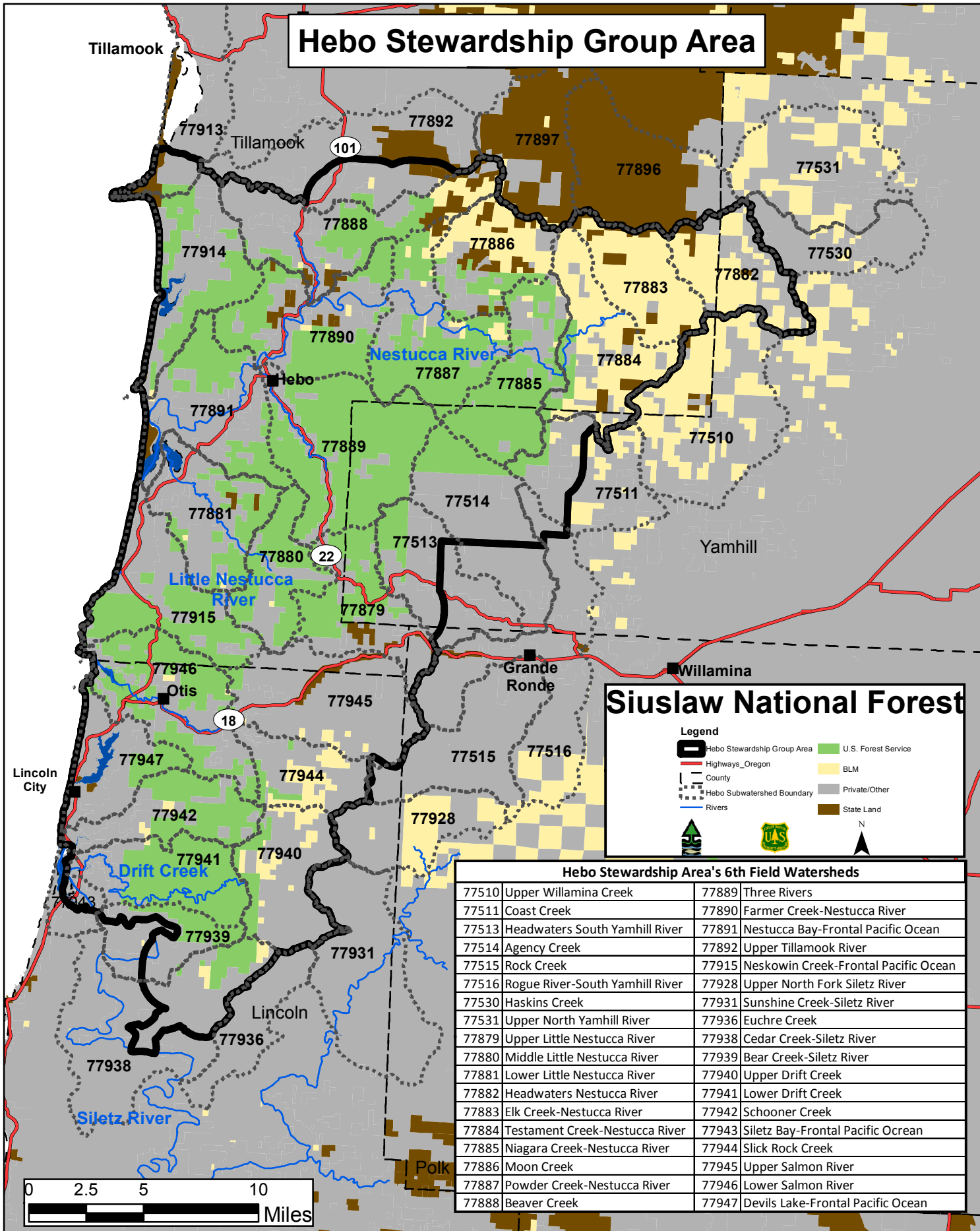


Hebo Stewardship Group Area



Siuslaw National Forest

Legend

- Hebo Stewardship Group Area
- Highways_Oregon
- County
- Hebo Subwatershed Boundary
- Rivers
- U.S. Forest Service
- BLM
- Private/Other
- State Land

N

Hebo Stewardship Area's 6th Field Watersheds

77510	Upper Willamina Creek	77889	Three Rivers
77511	Coast Creek	77890	Farmer Creek-Nestucca River
77513	Headwaters South Yamhill River	77891	Nestucca Bay-Frontal Pacific Ocean
77514	Agency Creek	77892	Upper Tillamook River
77515	Rock Creek	77915	Neskowin Creek-Frontal Pacific Ocean
77516	Rogue River-South Yamhill River	77928	Upper North Fork Siletz River
77530	Haskins Creek	77931	Sunshine Creek-Siletz River
77531	Upper North Yamhill River	77936	Euchre Creek
77879	Upper Little Nestucca River	77938	Cedar Creek-Siletz River
77880	Middle Little Nestucca River	77939	Bear Creek-Siletz River
77881	Lower Little Nestucca River	77940	Upper Drift Creek
77882	Headwaters Nestucca River	77941	Lower Drift Creek
77883	Elk Creek-Nestucca River	77942	Schooner Creek
77884	Testament Creek-Nestucca River	77943	Siletz Bay-Frontal Pacific Ocean
77885	Niagara Creek-Nestucca River	77944	Slick Rock Creek
77886	Moon Creek	77945	Upper Salmon River
77887	Powder Creek-Nestucca River	77946	Lower Salmon River
77888	Beaver Creek	77947	Devils Lake-Frontal Pacific Ocean